

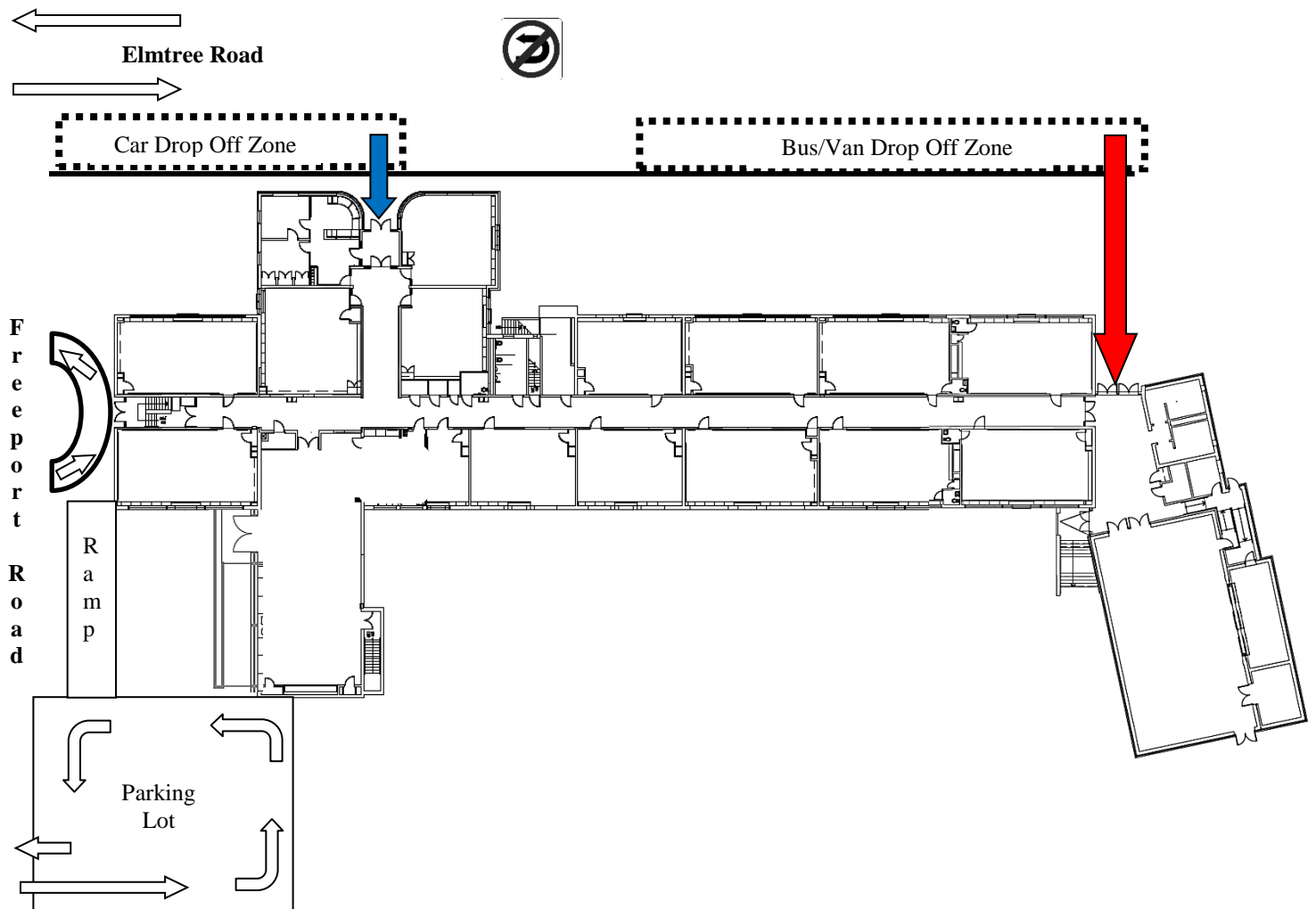
Greenwald Site Arrival Map

This map is meant to detail the procedures for children entering the building each morning at the Greenwald Site by bus or by car. Please share this information with all those who may bring your child(ren) to school. Children may enter the building between 7:35 and 7:50 am. The tardy bell rings at 7:50 with prayers in homeroom starting at 7:55. In the event of tardy arrival (sounded by the automated bell) and for the safety of your child, parents must park in the school parking lot (entrance on Freeport Road), enter the building's main door on Elmtree Road, with their child, and sign their child in at the office.

Buses and vans enter Elmtree Road off Freeport Road and release children at the gymnasium entrance, stopping along the No Parking staging area beyond the main entrance point.

Cars enter Elmtree Road off Freeport Road and release children at the main entrance, stopping along the No Parking staging area before the main entrance point. Cars may not do a U turn. Continue down Elmtree and through the neighborhood to exit the Rossmont housing plan.

There is no parking on Elmtree Road any time of the day. If you need to enter the school, pull into the parking lot off Freeport Road.



Greenwald Site Dismissal Map

This map is also meant to detail the procedures for car rider dismissal at the Greenwald Site. Please share this information with all those who may collect your child(ren) at the end of the day.

The bus loading zone is on Elmtree Road. Bus and van students exit via the doors by the gym to board their buses. Bus dismissal is at 2:40 pm, 11:40 am on early dismissal days, and 1:10 on early release days.

Cars enter the parking lot from Freeport Road and park in the available spaces. **Students will exit the basement doors adjacent to the parking lot. Please collect your child at this exit and carefully walk them to your car.** Car dismissal is at 2:50 pm, 11:50 am on early dismissal days, and 1:15 on early release days.

Parents arriving at Greenwald for an early release should park in the school parking lot (enter from Freeport Road, walk to the main entrance on Elmtree Road, and collect their child. There is no parking on Elmtree Road.

